

INDUSTRY NEWS



NEW Picatinny Rails from Raptor!

TE-CO/Raptor is pleased to announce that Darin Wion has taken over as the new regional manager in New England and Turpin Sales & Marketing is now the TE-CO/Raptor/Piranha workholding representative in the Mid-Atlantic states.

RWP-PIC6-DM

Picatinny Rail Fixture 6.00" Long– Direct mount

- Clamps a standard Picatinny Rail. This fixture mounts and locates with (2) socket head shoulder screws
- Workpiece Size Minimum: 6.00" long x .50" high
- Workpiece Size Maximum: 9.00" long x 4.00" x 4.00" tall (40 lb max)
- Body Material: 4140 PHT Steel
- Clamp Replacement Kit: RWP-KIT-PICSQ (Clamp Material is 17-4 Stainless Steel)
- Fixture Length 6.00"
- Fixture Height: 1.625"
- Fixture Width: 2.00"

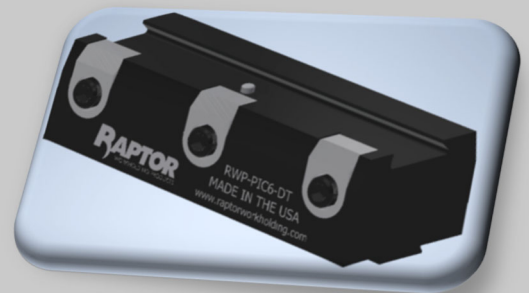


Raptor Picatinny Fixtures are made to hold your part on four and five-axis CNC machines. The fixtures provide rigid clamping while exposing five faces of the workpiece – Most features can be completed in a single operation. Our unique Raptor Picatinny spring-loaded clamps are designed to fit the industry standard to hold the rails. You prepare a picatinny rail on your first operation, and this fixture will hold your final operation. Easy, strong and efficient.

RWP-PIC6-DT

Picatinny Rail Fixture 6.00" Long– Dovetail mount

Raptor Picatinny Fixtures are made to hold your part on four and five-axis CNC machines. The fixtures provide rigid clamping while exposing five faces of the workpiece – Most features can be completed in a single operation. Our unique Raptor Picatinny spring-loaded clamps are designed to fit the industry standard to hold the rails. You prepare a picatinny rail on your first operation, and this fixture will hold your final operation. Easy, strong and efficient.



Cont. on page 2

INDUSTRY NEWS

RWP-PIC9-DM

Picatinny Rail Fixture 6.00" Long– Direct mount

- Clamps a standard Picatinny Rail. This fixture mounts and locates with (2) socket head shoulder screws
- Workpiece Size Minimum: 3.50" long x .50" high
- Workpiece Size Maximum: 6.50" long x 4.00" x 4.00" tall (40 lb max)
- Body Material: 4140 PHT Steel
- Clamp Replacement Kit: RWP-KIT-PICSQ (Clamp Material is 17-4 Stainless Steel)
- Fixture Length 3.50"
- Fixture Height: 1.625"
- Fixture Width: 2.00"



Raptor Picatinny Fixtures are made to hold your part on four and five-axis CNC machines. The fixtures provide rigid clamping while exposing five faces of the workpiece – Most features can be completed in a single operation. Our unique Raptor Picatinny spring-loaded clamps are designed to fit the industry standard to hold the rails. You prepare a picatinny rail on your first operation, and this fixture will hold your final operation. Easy, strong and efficient.

Visit www.raptorworkholding.com for more information.