

## INDUSTRY NEWS



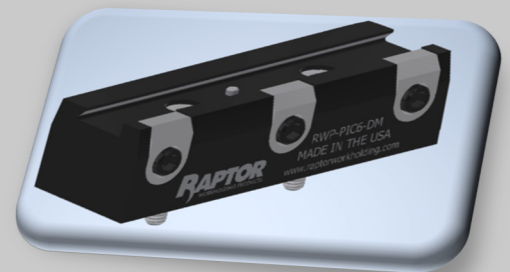
### NEW Picatinny Rails from Raptor!

TE-CO/Raptor is pleased to announce that Darin Wion has taken over as the new regional manager in New England and Turpin Sales & Marketing is now the TE-CO/Raptor/Piranha workholding representative in the Mid-Atlantic states.

#### RWP-PIC6-DM

#### Picatinny Rail Fixture 6.00" Long— Direct mount

- Clamps a standard Picatinny Rail. This fixture mounts and locates with (2) socket head shoulder screws
- Workpiece Size Minimum: 6.00" long x .50" high
- Workpiece Size Maximum: 9.00" long x 4.00" x 4.00" tall (40 lb max)
- Body Material: 4140 PHT Steel
- Clamp Replacement Kit: RWP-KIT-PICSQ (Clamp Material is 17-4 Stainless Steel)
- Fixture Length 6.00"
- Fixture Height: 1.625"
- Fixture Width: 2.00"

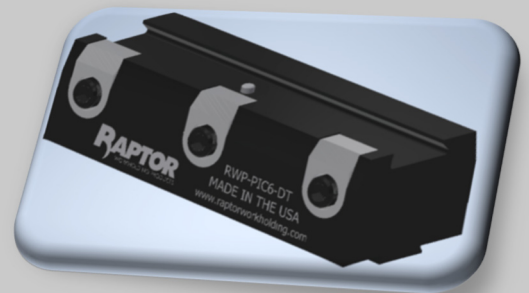


Raptor Picatinny Fixtures are made to hold your part on four and five-axis CNC machines. The fixtures provide rigid clamping while exposing five faces of the workpiece – Most features can be completed in a single operation. Our unique Raptor Picatinny spring-loaded clamps are designed to fit the industry standard to hold the rails. You prepare a picatinny rail on your first operation, and this fixture will hold your final operation. Easy, strong and efficient.

#### RWP-PIC6-DT

#### Picatinny Rail Fixture 6.00" Long— Dovetail mount

Raptor Picatinny Fixtures are made to hold your part on four and five-axis CNC machines. The fixtures provide rigid clamping while exposing five faces of the workpiece – Most features can be completed in a single operation. Our unique Raptor Picatinny spring-loaded clamps are designed to fit the industry standard to hold the rails. You prepare a picatinny rail on your first operation, and this fixture will hold your final operation. Easy, strong and efficient.

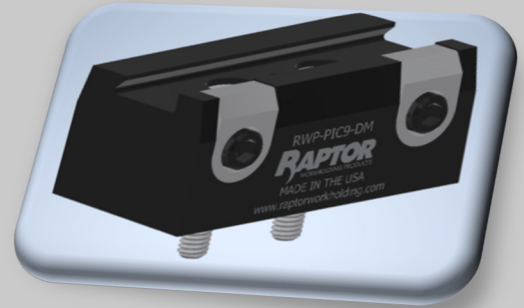


Cont. on page 2

## INDUSTRY NEWS

### **RWP-PIC9-DM Picatinny Rail Fixture 6.00" Long– Direct mount**

- Clamps a standard Picatinny Rail. This fixture mounts and locates with (2) socket head shoulder screws
- Workpiece Size Minimum: 3.50" long x .50" high
- Workpiece Size Maximum: 6.50" long x 4.00" x 4.00" tall (40 lb max)
- Body Material: 4140 PHT Steel
- Clamp Replacement Kit: RWP-KIT-PICSQ (Clamp Material is 17-4 Stainless Steel)
- Fixture Length 3.50"
- Fixture Height: 1.625"
- Fixture Width: 2.00"



Raptor Picatinny Fixtures are made to hold your part on four and five-axis CNC machines. The fixtures provide rigid clamping while exposing five faces of the workpiece – Most features can be completed in a single operation. Our unique Raptor Picatinny spring-loaded clamps are designed to fit the industry standard to hold the rails. You prepare a picatinny rail on your first operation, and this fixture will hold your final operation. Easy, strong and efficient.

Visit [www.raptorworkholding.com](http://www.raptorworkholding.com) for more information.

Please contact Turpin Sales & Marketing with any questions or for more information.

Jeff Henry  
Vice President & Market Manager  
ME, NH, MA, VT, RI, CT  
[jhenry@turpinsales.com](mailto:jhenry@turpinsales.com)  
Cell: 802-254-1407

Mike Pazos  
Market Manager  
Western MA, CT, NYC, LI, NJ  
[mpazos@turpinsales.com](mailto:mpazos@turpinsales.com)  
Cell: 413-426-8365

Trevor McDonald  
Market Manager  
NY, Eastern PA, DE, MD  
[tmcdonald@turpinsales.com](mailto:tmcdonald@turpinsales.com)  
Cell: 585-230-8226